

About Western Health

Western Health is a large healthcare provider serving a culturally diverse community in Melbourne's western suburbs.

We have over 11,000 staff that care for over 900,000 patients. We provide comprehensive care for all life stages, from newborn to geriatric patients, who speak over 150 languages and dialects.

Our Services

We provide a combination of services that include:

- **Acute and subacute hospital care** from four public hospitals:
 - Sunshine Hospital (including Joan Kirner Women's and Children's)
 - Footscray Hospital
 - Williamstown Hospital
 - Bacchus Marsh and Melton Hospital
- **Community based programs** from several community health centres and Drug Health Services
- **In-reach services** that provide hospital care in the comfort of a patient's own home
- **Medication governance and healthcare services** to Grant Lodge Residential Aged Care and Dame Phyllis Frost Correction Centre
- **Education and research** through our dedicated department, the Western Centre for Health Research and Education

We also have the New Footscray Hospital opening in late 2025 that will offer state-of-the-art digital technology including pharmacy robots and automated dispensing cabinets.

CONTACT DETAILS

Need more information?

Contact:

Senior Education Pharmacist / Intern Coordinator

Julie Vi

Julie.Vi@wh.org.au

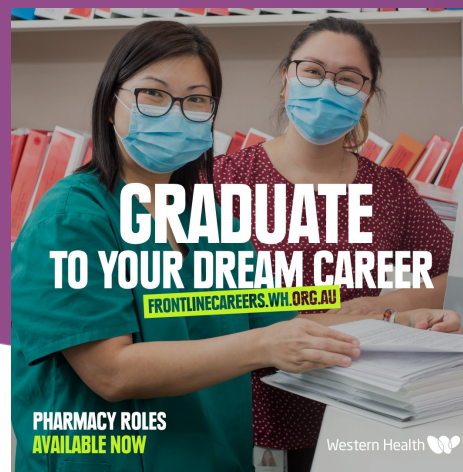
Kathy Phan

Kathy.Phan@wh.org.au

Western Health
Pharmacy Department
Gordon St. Footscray
VIC 3011

Phone: 03 8345 6442

Mobile: 0466 377 535



Our Values

Compassion - consistently acting with empathy and integrity

Accountability - taking responsibility for our decisions and actions

Respect - for the rights, beliefs and choice of every individual

Excellence - inspiring and motivating, innovation and achievement

Safety - prioritising safety as an essential part of everyday practice

Together, caring for the West, our patients, staff, community and environment.



PHARMACY INTERNSHIP PROGRAM



Aim of the program

To facilitate learning and develop practical experience in preparation for registration as a pharmacist.

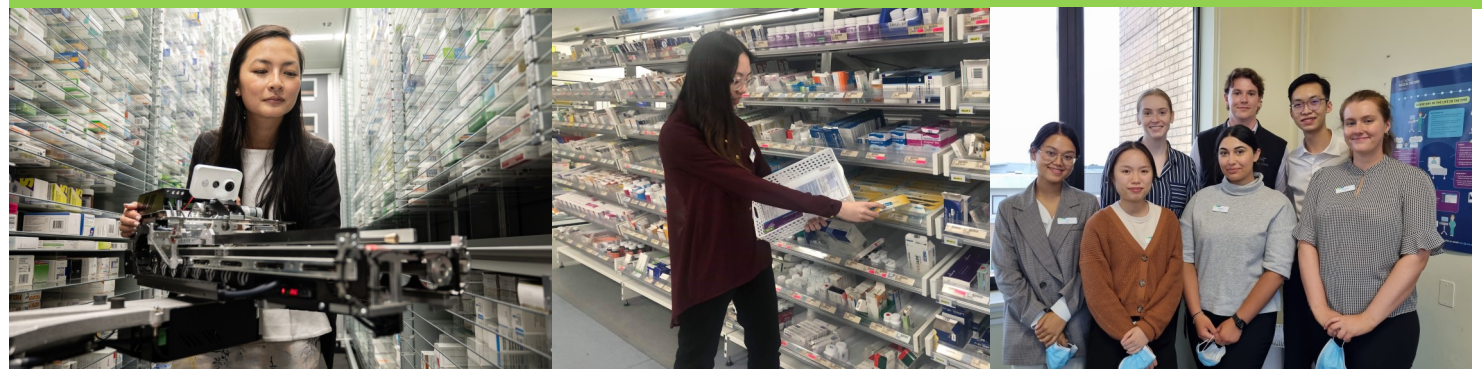
Structure of the program

- SEVEN positions available (five government funded, two self-funded)
- Support the Monash Intern Training Program (ITP) and the Monash Intern Foundation Program (IFP)
- Two weeks of intensive orientation
- Elective rotation opportunities
- Practical training rotations across Footscray and Sunshine hospitals that include:

Clinical	General Surgery General Medicine Gastroenterology Infectious Disease Respiratory Cardiology Maternity Aged Care Orthopaedics Neurology Electives: Emergency, Paediatrics, Mental Health, Clinical Trials
Operational	Dispensary (Inpatient and Outpatient) Manufacturing (non-sterile)
Quality	Medication Safety Medicines Information
Other Activities	Antimicrobial Stewardship Ward Rounds Acute Pain Management Services Ward Rounds Hospital Outreach Medication Reviews Quality Improvement Projects (IFP)



Come and join us at Western Health!



Key Features of the Intern Program at Western Health

- Usual working hours Mondays to Fridays (8:15am - 5:00pm)
- One in seven Saturday shifts
- Weekly tutorials (2 hours) conducted by pharmacists working in specialty areas and intern preceptors which covers a range of clinical, primary care and legislative topics
- Two full-day workshops to prepare for the Australian Pharmacy Council written exam
- Practice oral exams in preparation for the Pharmacy Board of Australia oral exam
- Intern preceptors/ mentors allocated to each intern
- Dedicated time for research projects
- Internal and inter-hospital social events
- Future career opportunities including the option to join our Resident Training Program

